



The Time is Now! Art Worlds of Chicago's South Side, 1960–1980

September 13 to December 30, 2018 | Celebrating South Side Stories: September 15, 11am–6pm



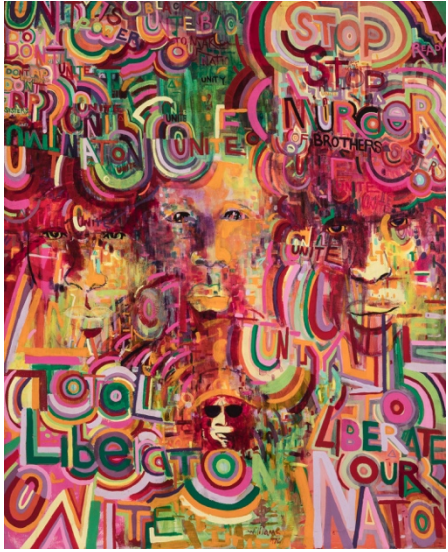
Presented as part of Art Design Chicago, exhibition offers immersive examination of the South Side, as told by art and artists who shaped its contours—from the Chicago Imagists to the Black Arts Movement

The Smart Museum of Art at the University of Chicago presents *The Time is Now! Art Worlds of Chicago's South Side, 1960–1980*, a major new exhibition that reassesses the story of postwar Chicago art through a nuanced look at the artists living, working, and exhibiting on the city's South Side. The exhibition focuses primarily on African American artists in and out of the Black Arts Movement and explores the ways artists applied their creative practices to address some of the most urgent issues of this momentous era of change and conflict, producing work that continues to resonate within current national dialogues around race, protest, and belonging.

On view from September 13 to December 30, 2018, the exhibition examines the richness of the multiple overlapping art scenes active in the 1960s and 70s in Chicago neighborhoods like Bronzeville, Kenwood, Hyde Park, Woodlawn, and Washington Park. It features approximately 100 objects, assembled from the Smart Museum's collection and other public and private collections, including important and rarely seen work by Barbara Jones-Hogu, Jae Jarrell, Wadsworth Jarrell, Yaoundé Olu, and Douglas Williams. *The Time is Now!* is presented as part of Art Design Chicago, a citywide exploration of Chicago's art and design legacy spearheaded by the Terra Foundation for American Art. It is also presented in partnership with the DuSable Museum of African American History as part of a joint exhibition project.

“If you ask national and international art audiences what happened in Chicago art in the 1960s and 1970s, they might think of the Chicago Imagists and their famous series of exhibitions at the Hyde Park Art Center,” said guest curator Rebecca Zorach, Mary Jane Crowe Professor in Art and Art History at Northwestern University. “But many different spaces and movements fostered creative work on the South Side in this period. *The Time is Now!* brings the voices of artists themselves to the fore and begins the important work to account for the full range of art and artists in this vibrant period.”

The exhibition, together with a scholarly catalogue and a series of public programs, looks at how artists both responded to and shaped the cultural geography of the South Side by charting new artistic courses,



challenging the political status quo, creating new spaces for art, and reimagining the future. It includes painting, sculpture, photographs, prints, and ephemera associated with watershed cultural moments: from the Hairy Who to the Wall of Respect, from AfriCOBRA to visionary outsider art, and from vivid protest posters to the radical jazz of the Association for the Advancement of Creative Musicians.

“The Smart Museum is incredibly proud to present this exhibition, and humbled to collaborate with so many artists, scholars, activists, students, and cultural workers to share this story,” said Alison Gass, Dana Feitler Director of the Smart Museum. “As a university art museum situated on the South Side, the Smart is deeply committed to crafting an institutional program that is

reflective of our place—one that is infused by its cultural and intellectual energy. *The Time is Now!* shows that, at its best, the Smart can be a site of convergence for our publics to have critical, stimulating, and even sometimes difficult conversations.”

At the Smart Museum, *The Time is Now!* is presented concurrently with *Expanding Narratives: The Figure and the Ground* (now through December 30, 2018), a project that openly examines the content and role of the Museum’s collection, and the ways in which the addition of new works, particularly works by women and artists of color, can shift and expand narrative possibilities. Following *The Time is Now!*, the Smart will present *Solidary & Solitary: The Joyner/Giuffrida Collection* (January 29–April 29, 2019), a major touring exhibition that tells the history of art by African American artists, with a particular emphasis on abstraction, from the 1940s to the present moment.

Artists

The Time is Now! includes work by Gertrude Abercrombie, Ralph Arnold, Ben Bey, Darryl Cowherd, Jeff Donaldson, Harold Haydon, Jae Jarrell, Wadsworth Jarrell, Barbara Jones-Hogu, Lester Lashley, Carolyn Lawrence, Yaoundé Olu, Robert Paige, Suellen Rocca, Robert A. Sengstacke, Pauline Simon, Gerald Williams, and Joseph Yoakum, among many others.

Revisited/Reflected

As part of *The Time is Now!*, Tempestt Hazel—an independent curator, writer, artists’ advocate, and founding editor of *Sixty Inches From Center*—is curating a series of programs that draws on the archives of South Side institutions like the DuSable Museum and the South Side Community Art Center to revisit significant events that connected and convened artists between 1960 and 1980. Called Revisited/Reflected, the series will bring together Black artists, writers, and others working across



Chicago’s creative communities for public discussions and an artist-organized dance party. The series offers an opportunity to reflect on the lessons and models provided by artists of an earlier generation and draw connections to artistic practice and conversations in our current moment.

Full details on the series will be announced later this summer.

Opening celebration

On Saturday, September 15, from 11 am to 6 pm, the free festival “Celebrating South Side Stories” kicks off *The Time is Now!* and several additional Art Design Chicago exhibitions and projects. The program features art, music, film, and food across several cultural venues. It celebrates the historic and ongoing role that art and design

played in growing communities and strengthening neighborhoods on Chicago’s South Side. The program is presented by Art Design Chicago, Diasporal Rhythms, the DuSable Museum of African American History, Hyde Park Art Center, Museum of Contemporary Photography, Smart Museum of Art, and South Side Community Art Center, and South Side Projections.

Related publication

The exhibition’s catalogue features a series of essays, interviews, and other contextual material, along with full-color images of all the works included in the exhibition and extensive reproductions of ephemera and historical photographs. It is edited by Rebecca Zorach and Marissa H. Baker with essays by Rebecca Zorach, Tempestt Hazel, Marissa H. Baker, Davarian Baldwin, and Mary Pattillo, among others. The book is published by the Smart Museum of Art and distributed through the University of Chicago Press. Available fall 2018.

Art Design Chicago

The Time is Now! is presented as part of Art Design Chicago, an initiative of the Terra Foundation for American Art with presenting partner The Richard H. Driehaus Foundation that celebrates the unique and vital role that Chicago plays as America’s crossroads of creativity and commerce. Visit ArtDesignChicago.org for an up-to-date list of related exhibitions and public programs.

Curators

The Time Is Now! is curated by Rebecca Zorach, Mary Jane Crowe Professor in Art and Art History at Northwestern University. Public programming for *The Time Is Now!* is curated by Tempestt Hazel, independent curator, writer, artists’ advocate, and founding editor of *Sixty Inches From Center*. This project is organized in consultation with Michael Christiano, Deputy Director and Curator of Public Practice; Jennifer Carty, Assistant Curator of Modern and Contemporary Art; and Gail Gomez, Exhibitions and Publications Coordinator.

Support

The *Time is Now!* and its catalogue have been made possible in part by the Terra Foundation for American Art and The Richard H. Driehaus Foundation. Additional significant support has been provided by the National Endowment for the Arts, the Smart Museum's Pamela and R. Christopher Hoehn-Saric Exhibition Fund, the Elizabeth Firestone Graham Foundation, and our SmartPartners.



An initiative of
the Terra Foundation
for American Art
exploring Chicago's
art and design legacy.



Presenting Partner



National
Endowment
for the Arts
arts.gov

The exhibition is presented in the Robert and Joan Feitler Gallery, the Joel and Carole Bernstein Gallery, the Edward A. and Inge Maser Gallery, and the Janis Kanter and Thomas McCormick Gallery.

###

Images

Darryl Cowherd, *The Time is Now*, c.1966, Gelatin silver print. Collection of the artist.

Gerald Williams, *Messages*, 1970, Acrylic on canvas. Smart Museum of Art, The University of Chicago, Purchase, The Paul and Miriam Kirkley Fund for Acquisitions, 2017.8.

Barbara Jones-Hogu, *Land Where My Father Died*, 1968, Color screenprint on gold-colored Japanese-style laid paper. Smart Museum of Art, The University of Chicago, Purchase, The Paul and Miriam Kirkley Fund for Acquisitions and The James M. Wells Curatorial Discretion Acquisition Fund, 2016.13.1.

About the Smart Museum of Art

The Smart Museum of Art at the University of Chicago is a site for rigorous inquiry and exchange that encourages the examination of complex issues through the lens of art objects and artistic practice. Through strong community and scholarly partnerships, the Museum incorporates diverse ideas, identities, and experiences into its exhibitions and collections, academic initiatives, and public programming. The Smart first opened in 1974. Admission is always free.

Mission

The Smart Museum of Art at the University of Chicago opens the world through art and ideas.

Smart Museum of Art

The University of Chicago
5550 S. Greenwood Avenue
Chicago, IL 60637

773.702.0200

smartmuseum.uchicago.edu

smart-museum@uchicago.edu

Hours

Tuesday–Sunday, 10 am–5 pm

Thursday evenings until 8 pm

Galleries are closed Mondays and holidays.

Admission is always free. All are welcome.