



Left:
Glenn Ligon, *One Black Day*,
2012, Neon.
The Joyner/Giuffrida Collection.

Right:
Catherine Opie, *Self-Portrait/
Nursing*, From the series
Self-Portraits & Dyke, 2004,
C-print, Edition of 8, 2 AP.

CALL FOR APPLICATIONS

GRADUATE STUDENT

GALLERY TALKS

Deadline: Apply now through December 28

The Smart Museum of Art seeks six UChicago graduate students to deliver short gallery talks about works of art during programs on **January 28** and **February 11**. Talks will introduce works of art in the special exhibitions *Solidary & Solitary: The Joyner/Giuffrida Collection* and *Smart to the Core: Embodying the Self* to an audience of well-informed non-specialists from the University and broader community.

Speakers will be paid \$300. To learn more about the opportunity, see reverse.

QUESTIONS?

Contact Issa Lampe, Director of the Feitler Center
for Academic Inquiry at the Smart Museum of Art,
issalampe@uchicago.edu

SMART MUSEUM OF ART
THE UNIVERSITY OF CHICAGO

CALL FOR APPLICATIONS

GRADUATE STUDENT GALLERY TALKS

THE PROGRAM

The Smart Museum of Art seeks six UChicago graduate students to deliver very short gallery talks about one work of art (each) during a series of programs in Winter quarter. The gallery talks will introduce works of art in the special exhibitions *Solidary & Solitary: The Joyner/Giuffrida Collection* and *Smart to the Core: Embodying the Self* to an audience of well-informed non-specialists from the University and broader community.

Talks will be performed in “speed rounds” by six speakers stationed throughout the exhibition spaces of *Solidary & Solitary* and *Embodying the Self*. Speakers will receive coaching in public speaking about works of art in a gallery space. Each speaker’s final presentation will last 2–3 minutes. Talks will be pitched, composed, memorized, and practiced.

ELIGIBILITY

UChicago MA or PhD candidates from any discipline.

DATES and COMMITMENT

Applicants must be available for the two performance dates and at least three preparatory meetings (students who cannot commit to both performance dates should not apply):

- Group meeting during week of January 7
- Group meeting during week of January 14
- Dry run/dress rehearsal on January 21 or 22
- Performances on January 28 and February 11

Planning meetings and rehearsal will be scheduled around students’ availability.

STIPEND

\$300 payment upon completion of series

APPLICATION

Apply with a one-page pitch (200 word max) about one work of art from the attached checklists for the exhibitions. State briefly how you would propose to engage an audience with your chosen work through visual description/analysis and contextual information. Attach CV and provide name and contact information for one UChicago academic reference.

DEADLINE

Applications will be considered on a rolling basis. Please submit no later than **5 pm on December 28, 2018**.

QUESTIONS?

Contact **Issa Lampe**, Deputy Director for Academic and Curatorial Affairs and Director of the Feitler Center for Academic Inquiry at the Smart Museum of Art, issalampe@uchicago.edu



Smart to the Core: Embodying the Self

Current Checklist



2013.30
Arthur Amiotte

2001
Acrylic and collage on canvas
Canvas: 36 × 48 in. (91.4 × 121.9 cm)
Framed: 40 1/16 × 52 1/16 × 1 7/8 in. (101.8 × 132.2 × 4.8 cm)
Gift of Miranda and Robert Donnelley



1971.43
Marcel Duchamp

1924
Lithograph on wove paper
Sheet: 12 9/16 x 8 3/4 in. (31.9 x 22.2 cm)
Gift of Katharine Kuh



PTR512/31
Melvin Edwards

1992
Welded steel
22 x 14 x 7 1/2 in.
The Joyner / Giuffrida Collection



PTR624

Robert Gober

American, born 1954

Untitled, 1992-1996

Photolithograph on archival French Dur-O-Tone paper

Overall: 22 1/2 × 13 1/2 in. (57.2 × 34.3 cm)

Collection of the artist, Courtesy Matthew Marks Gallery

PTR631

Ayana V. Jackson

American, b. 1977

Labouring under the sign of the future

Archival pigment print on German etching paper

Overall: 46 7/8 × 42 7/8 in. (119.1 × 109 cm)

Ayana V. Jackson, *Labouring Under the sign of the Future*, 2016,

Courtesy of the Artist and Mariane Ibrahim Gallery

PTR605/5a-v

Geng Jianyi

Chinese, b. 1962

This Person

1994

5 black and white photographs, 3 copper coins, 1 fortune telling board, and 14 original handwritten notes and drawings

variable

Through prior purchase from the Mary and Leigh Block Fund



PTR634/1

Win McCarthy

American, b. 1986

The Conversationalist

2017

Glass, cloth, wood, c-prints, shoelace

Overall: 57 1/8 × 18 1/2 × 3 15/16 in. (145.2 × 47 × 10 cm)



PTR633/1

Ana Mendieta

American, born in Cuba, 1948-1985

Untitled (from the Silueta Series)

Gelatin silver print



PTR633/2

Ana Mendieta

American, born in Cuba, 1948-1985

Untitled (from the Silueta series)

Gelatin silver print



PTR615

Kent Monkman

Canadian, b. 1965

Study for Artist and Model

2003

Acrylic on canvas

20 × 24 in. (50.8 × 61 cm)



1995-79

Yasumasa Morimura

Japanese, b. 1951

Ambiguous Beauty / Aimai-no-bi

Folding fan, ed. of 5000 for the Peter Norton Family Christmas project 1995; ed. of 5000

1995

Paper

20 x 20 in. (50.8 x 50.8 cm)

Gift of the Peter Norton Family



PTR605/3

Zanele Muholi

South African, b. 1972

ZaVa, Amsterdam

edition of 4/8

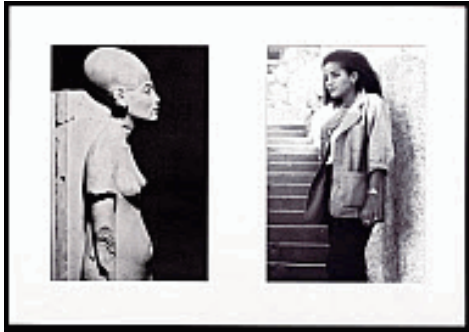
2014

Gelatin silver print

Image: 14 15/16 × 19 3/16 in. (38 × 48.8 cm)

Overall: 19 1/2 × 25 1/8 in. (49.5 × 63.8 cm)

Gift of Christopher E. Olofson



PTR634/3

Lorraine O'Grady

American, b. 1934

Miscegenated Family Album (Cross Generational) m L: Nefertiti, the last image; R: Devonia's youngest Daughter, Kimberley

1980/1994

C-prints

Overall: 26 × 37 in. (66 × 94 cm)



PTR623

Catherine Opie

American, b. 1961

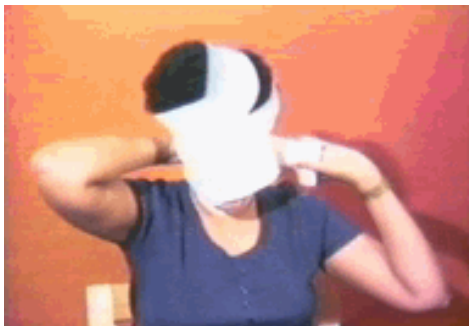
Self-Portrait/Nursing

From the series Self-Portraits & Dyke

2004

C-print, edition of 8, 2 AP

Overall: 40 × 32 in. (101.6 × 81.3 cm)



TR2889

Howardena Doreen Pindell

American, b. 1943

Free, White and 21

1980

Video

12 minutes 17 seconds

Courtesy the artist and Garth Greenan Gallery New York.



2001.126a

Adrian Piper

American, b. 1948

I am the Locus (#1)

1975

Oil crayon drawing on photograph

Sheet: 8 x 10 in. (20.3 x 25.4 cm)

Purchase, Gift of Carl Rungius, by exchange



2001.126b

Adrian Piper

American, b. 1948

I am the Locus (#2)

1975

Oil crayon drawing on photograph

Sheet: 8 x 10 in. (20.3 x 25.4 cm)

Purchase, Gift of Carl Rungius, by exchange



2001.126c

Adrian Piper

American, b. 1948

I am the Locus (#3)

1975

Oil crayon drawing on photograph

Sheet: 8 x 10 in. (20.3 x 25.4 cm)

Purchase, Gift of Carl Rungius, by exchange



2001.126d

Adrian Piper

American, b. 1948

I am the Locus (#4)

1975

Oil crayon drawing on photograph

Sheet: 8 x 10 in. (20.3 x 25.4 cm)

Purchase, Gift of Carl Rungius, by exchange



2001.126e

Adrian Piper

American, b. 1948

I am the Locus (#5)

AP 75001

1975

Oil crayon drawing on photograph

Sheet: 8 x 10 in. (20.3 x 25.4 cm)

Purchase, Gift of Carl Rungius, by exchange



PTR627

Adrian Piper

American, b. 1948

The Mythic Being

1973

Video

00:08:00



PTR614

Ma Qiusha

From No. 4 Pingyuanli to No. 4 Tianqiaobeili

edition of 6

2007

Video

7 minutes, 54 seconds



TR2901

Paul Mpagi Sepuya

American, b. 1982

Mirror Study for Joe (_2010980)

Ed. 4/5

2017

Archival Pigment print mounted to dibond

Framed: 45 1/8 x 33 1/2 x 2 in. (114.6 x 85.1 x 5.1 cm)

46 x 34 in. (116.8 x 86.4 cm)

[Proposed Purchase]



PTR634/2

Anna Shteynshleyger

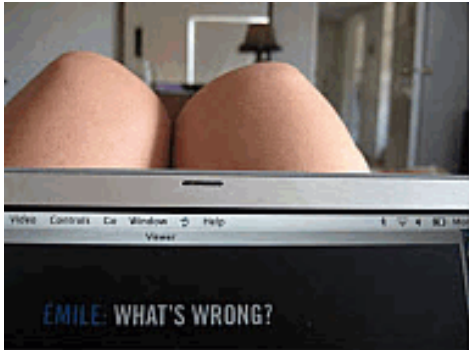
American, born Russia, 1977

Portrait with Mordecai

2004-2009

C-print

Overall: 50 × 40 in. (127 × 101.6 cm)



PTR634/4

Frances Stark

American, b. 1967

Structures that fit my opening (and other parts considered in relation to their whole)

digital transfer

2006

Powerpoint on laptop

25 minutes



2008.48

Tony Tasset

American, b. 1960

Pieta

Ed. 1/3

2007

Cast hydrocal

Overall: 28 x 18 x 18 in. (71.1 x 45.7 x 45.7 cm)

Purchase, Paul and Miriam Kirkley Fund for Acquisitions



PTR626

Hank Willis Thomas

I Am A Man

2009

Liquitex on twenty framed canvases

Painting panel: 25 1/4 × 19 1/4 in. (64.1 × 48.9 cm)

Overall: 55 1/4 × 228 in. (140.3 × 579.1 cm)



TR2823/5

Kara Walker

American, b. 1969

The Katastroph Karavan (Maquette)

2017

Painted laser-cut stainless steel

9 1/8 × 14 5/8 × 5 1/2 in. (23.2 × 37.1 × 14 cm)

The Joyner/Giuffrida Collection



PTR617/1

Gillian Wearing

English, born 1963

Self Portrait as My Mother Jean Gregory

2003

Black and white print

Overall: 53 1/8 × 45 5/8 in. (134.9 × 115.9 cm)



PTR617/2

Gillian Wearing

English, born 1963

Self Portrait as My Father Brian Wearing

2003

Black and white print

Overall: 64 9/16 × 51 3/8 in. (164 × 130.5 cm)



2014.85

Carrie Mae Weems

American, b. 1953

Some Said You Were the Spitting Image of Evil

From the series: From Here I Saw What Happened and I Cried

1995-1996

Chromogenic color print with sandblasted text on glass

Image (Sheet): 23 1/2 × 19 1/2 in. (59.7 × 49.5 cm)

Framed: 26 3/4 × 22 3/4 in. (67.9 × 57.8 cm)

Gift of the Estate of Lester and Betty Guttman



2002.121

H. C. (Horace Clifford) Westermann

American, 1922-1981

Ghost (Death Ship)

MCA 102

1964-1965

Wood, enamel, wire, nails, and brass

10 1/8 × 13 1/8 × 3 5/8 in. (25.7 × 33.3 × 9.2 cm)

The H.C. Westermann Study Collection, Gift of the Estate of Joanna Beall Westermann



Solidary & Solitary: The Joyner/Giuffrida Collection

Current Checklist



PTR512/29

Number 52S

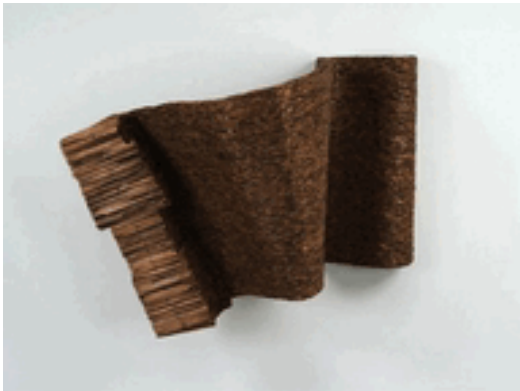
16 panels hung in four rows of 4 panels each

2015

Wood and paint

96 x 96 x 14 in.

The Joyner / Giuffrida Collection



PTR512/30

Number 29S

2013

Wood

36 x 20 1/2 x 44 in.

The Joyner / Giuffrida Collection

PTR512/61

Number 185

17 Sections hung in 4 rows of 4 each and one piece leaning into it from the floor

2016

Wood, paint, pastel, screws

121 x 134 x 30 in.

The Joyner / Giuffrida Collection



2018.14

Leonardo Drew

American, b. 1961

Number 205

2017

Wood, plaster and paint, plastic

61 1/2 x 65 x 12 in. (156.2 x 165.1 x 30.5 cm)

Purchase, The Paul and Miriam Kirkley Fund for Acquisitions



PTR512/31

Melvin Edwards

American, b. 1937

Words of Fanon

1992

Welded steel

22 x 14 x 7 1/2 in.

The Joyner / Giuffrida Collection



PTR512/32

Melvin Edwards

American, b. 1937

Central Ave. LA

1991

Welded steel

14 x 11 3/4 x 9 1/2 in.

The Joyner / Giuffrida Collection



PTR512/33

Melvin Edwards

American, b. 1937

A Conversation with Norman Lewis

1979

Welded steel

Element 1 (left): 41.5 x 42.36 x 27 in.

Element 2 (right): 56 x 46 x 31.36 in.

Courtesy the artist and Alexander Gray Associates, New York



PTR512/34

Melvin Edwards

American, b. 1937

Centuries

1993

Welded steel

8 x 9 x 11.5 in.

Courtesy the artist and Alexander Gray Associates, New York



PTR512/35

Melvin Edwards

American, b. 1937

Jom Time

1998

Welded steel

11.88 x 8.5 x 7.38 in.

Courtesy the artist and Alexander Gray Associates, New York



PTR512/36

Melvin Edwards

American, b. 1937

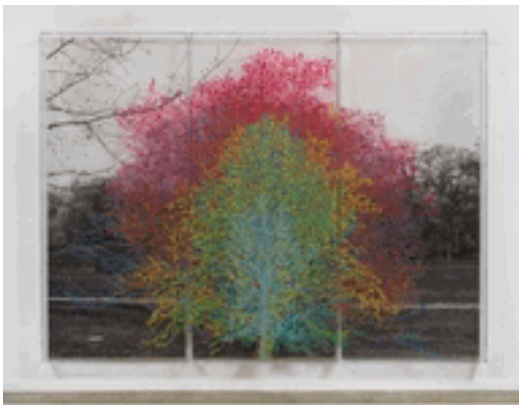
Hopes

2008-2009

Welded steel

9.5 x 7 x 5.5 in.

Courtesy the artist and Alexander Gray Associates, New York



PTR512/46

Charles Gaines

American, b. 1944

Numbers and Trees: Central Park Series I: Tree #9

2016

Black and white photograph, acrylic on Plexiglass

Each panel 96 x 42 in., overall approximately 8 x 10 ft.

The Joyner / Giuffrida Collection



PTR512/47

Charles Gaines

American, b. 1944

Explosion #17

2006

Graphite on paper, in two parts

64 x 39 1/4 in.

The Joyner / Giuffrida Collection



PTR512/48

Charles Gaines

American, b. 1944

Landscape: Assorted Trees with Regressions, Set I

1981

Color photo, ink on paper

sheets (four total): (2) 20 x 16 in. and (2) 20 x 29 in.

The Joyner / Giuffrida Collection



PTR512/1
Sam Gilliam
 American, b. 1933
Untitled
 1984
 Mixed media drawing (monoprint & rope) on handmade paper
 33 x 86 in.
 The Joyner / Giuffrida Collection



PTR512/2
Sam Gilliam
 American, b. 1933
Melody
 2010
 Acrylic on birch
 83 x 32 in.
 The Joyner / Giuffrida Collection



PTR512/3
Sam Gilliam
 American, b. 1933
Water Tower II
 1999
 Acrylic on birch with piano hinge
 24 x 39.5 x 3 in.
 The Joyner / Giuffrida Collection



PTR512/4
Sam Gilliam
 American, b. 1933
Reading Across
 1994
 Mixed media on board
 48 x 48 in.
 The Joyner / Giuffrida Collection



PTR512/5
Sam Gilliam
 American, b. 1933
Screen
 1982
 Acrylic on canvas
 58 x 66 in.
 The Joyner / Giuffrida Collection



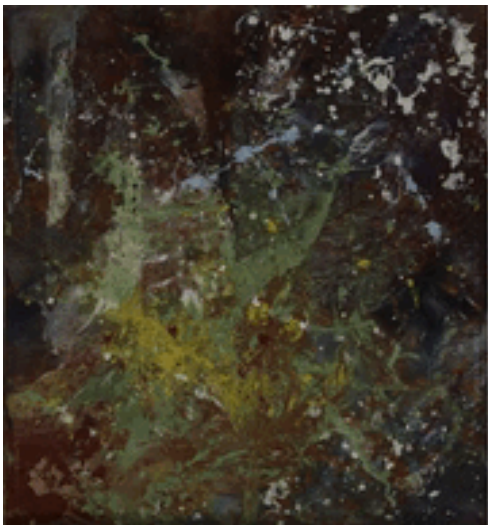
PTR512/6
Sam Gilliam
 American, b. 1933
Streak of Lightning
 1986
 Mixed media (acrylic, enamel, metal) on canvas
 68 x 89 in.
 The Joyner / Giuffrida Collection



PTR512/7
Sam Gilliam
 American, b. 1933
Dave Dove Liz
 1986
 Three dimensional color monotype in wooden box
 54 x 49 in.
 The Joyner / Giuffrida Collection



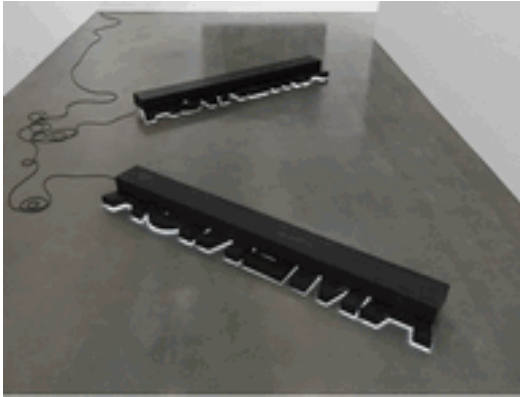
PTR512/8
Sam Gilliam
 American, b. 1933
Stand
 1973
 Mixed media on canvas
 85 1/2 x 118 1/8
 The Joyner / Giuffrida Collection



PTR512/9
Sam Gilliam
 American, b. 1933
Tinsle
 1973
 Acrylic on canvas
 48 x 51 in.
 The Joyner / Giuffrida Collection



PTR512/10
Sam Gilliam
 American, b. 1933
After Glow
 1972
 Acrylic and dye pigments on canvas
 74 1/4 x 100 1/4 x 2 in.
 The Joyner / Giuffrida Collection



PTR512/43

Glenn Ligon

Untitled (America America)

2015

Neon and blackened steel

22 x 125 x 10 in.

Jointly owned by the Joyner / Giuffrida Collection and The Rennie Collection



PTR512/44

Glenn Ligon

One Black Day

2012

Neon

5 x 24 1/2 in.

The Joyner / Giuffrida Collection



PTR512/45

Glenn Ligon

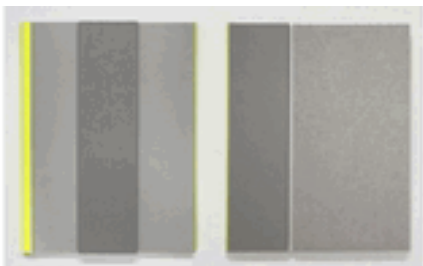
Stranger #68

2012

Oilstick, coal dust, and gesso on canvas

84 x 60 in.

The Joyner / Giuffrida Collection



PTR512/37

Jennie C. Jones

American, b. 1968

Light Gray with Bright Notes #1 & #2

2013

Acoustic absorber panel and acrylic paint on canvas

36 x 48 in.

The Joyner / Giuffrida Collection



PTR512/38

Jennie C. Jones

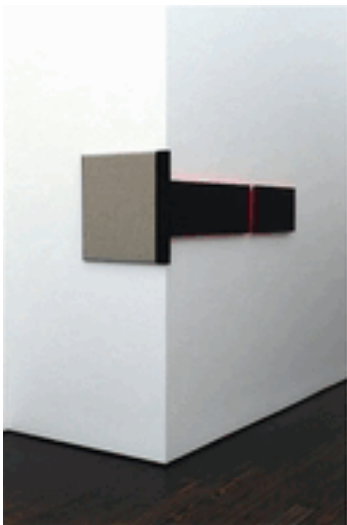
American, b. 1968

Shhh #6

2012

Professional Noise Cancelling Instrument Cable, wire and felt
48 x 10 x 3 in.

The Joyner / Giuffrida Collection



PTR512/39

Jennie C. Jones

American, b. 1968

Sustained Black with Broken Time and Undertone

2011

Acoustic noise control panel and acrylic on canvas, corner piece
24 x 24 and 12 x 48 in. (corner piece)

The Joyner / Giuffrida Collection



PTR512/40

Jennie C. Jones

American, b. 1968

Composition for Sharps #4

2010

Piano key sharps on treated linen
20 x 16 in.

The Joyner / Giuffrida Collection



PTR512/41

Jennie C. Jones

American, b. 1968

Composition for Sharps #5

2010

Piano key sharps on treated linen

20 x 16 in.

The Joyner / Giuffrida Collection



PTR512/42

Jennie C. Jones

American, b. 1968

Composition for Sharps #6

2010

Piano key sharps on treated linen

20 x 16 in.

The Joyner / Giuffrida Collection



PTR512/23

Kevin Beasley

American, b. 1985

Untitled (Vine)

2016

Housedresses, foam, resin

60 x 23 x 30 in.

The Joyner / Giuffrida Collection



PTR512/24

Kevin Beasley

American, b. 1985

Bronx Fitted

2015

New Era® Yankee fitted hats, bandanas, resin, television mount

70 x 70 x 16 in.

The Joyner / Giuffrida Collection



TR2824

Kevin Beasley

American, b. 1985

Untitled (witness)

2015

Altered house dresses and resin

37 x 25 x 21 in. (94 x 63.5 x 53.3 cm)

Private Collection



PTR512/16

Norman Lewis

American, 1909-1979

Afternoon

1969

Oil on canvas

72 x 88 in.

The Joyner / Giuffrida Collection



PTR512/17
Norman Lewis
 American, 1909-1979
Many Faces of Legend II
 1960
 Oil on canvas
 57 1/2 x 38 in.
 The Joyner / Giuffrida Collection



PTR512/18
Norman Lewis
 American, 1909-1979
Easter Rehearsal
 1959
 Pastel and ink on paper
 17 1/2 x 24 in.
 The Joyner / Giuffrida Collection



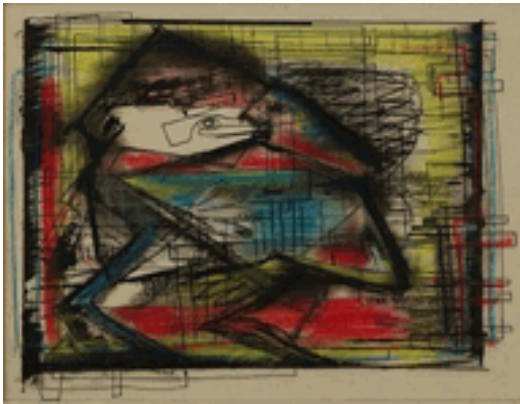
PTR512/19
Norman Lewis
 American, 1909-1979
Monkeys
 1958
 Pastel on paper
 18 1/2 x 25 3/4 in.
 The Joyner / Giuffrida Collection



PTR512/20
Norman Lewis
 American, 1909-1979
Untitled
 1955
 Oil on canvas
 25 x 50 in.
 The Joyner / Giuffrida Collection



PTR512/21
Norman Lewis
 American, 1909-1979
Untitled (Circular Procession of Figures)
 1953
 Oil on canvas
 25 x 30 in.
 The Joyner / Giuffrida Collection



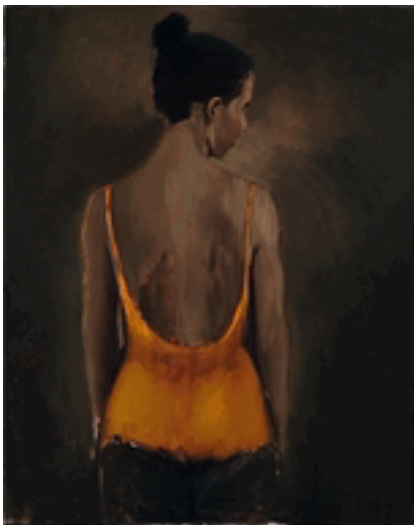
PTR512/22
Norman Lewis
 American, 1909-1979
Conversation (Two Abstract Heads)
 1945
 Pastel, crayon, wash, pen and ink on paper
 12 1/2 x 15 3/4 in.
 The Joyner / Giuffrida Collection



1993.49
Norman Lewis
 American, 1909-1979
Untitled
 Culmination of the artist's interest in elements of color, tone and line where the forms of the painting are its subject matter.
 1947
 Oil on canvas
 20 x 26 in. (50.8 x 66 cm)
 Framed: 20 13/16 x 26 5/8 in. (52.9 x 67.6 cm)
 Anonymous Gift



PTR512/49
Lynette Yiadom-Boakye
Godly Governance
 2013
 Oil on canvas
 59 x 55 in.
 The Joyner / Giuffrida Collection



PTR512/50
Lynette Yiadom-Boakye
Places to Love For
 2013
 Oil on canvas
 59 x 47 1/4 in.
 The Joyner / Giuffrida Collection



PTR512/51
Lynette Yiadom-Boakye
Fly
 On Somerset Soft White Velvet 300 gsm, 20 etchings per edition,
 edition 4 of 15, with 5 artists proofs and 2 printers proofs
 2012
 20 hard ground etchings
 each 6 7/8 x 8 1/4 in.
 The Joyner / Giuffrida Collection



PTR512/52
Lynette Yiadom-Boakye
Hedgerow
 2010
 Oil on canvas
 63 x 78 3/4 in.
 The Joyner / Giuffrida Collection



PTR512/53
Lynette Yiadom-Boakye
Standing Man Smiling
 2009
 Charcoal on paper
 110 1/4 x 59 in.
 The Joyner / Giuffrida Collection

PTR512/62
Lynette Yiadom-Boakye
Witching Hour
 2016
 Oil on canvas
 78 3/4 x 47 1/4 x 1 1/2 in.
 The Joyner / Giuffrida Collection



PTR512/56
Mark Bradford
Untitled
 edition 16 of 45
 2003
 Lithograph
 32 5/8 x 32 3/4 in.
 The Joyner / Giuffrida Collection

PTR512/57
Mark Bradford
Untitled
 edition 16 of 45
 2003
 Lithograph
 32 5/8 x 32 3/4 in.
 The Joyner / Giuffrida Collection



PTR512/11
Serge Alain Nitegeka
Exterior I - Studio Study II
 2013
 Paint on wood
 92 1/2 x 53 1/8 in.
 The Joyner / Giuffrida Collection



PTR512/12
Serge Alain Nitegeka
Interventionist III
 2012
 Paint on wood
 83 7/16 x 40 1/8 x 6 1/4 in.
 The Joyner / Giuffrida Collection



PTR512/13
Serge Alain Nitegeka
Interventionist IV
 2012
 Paint on wood
 83 7/16 x 40 5/16 x 5 1/2 in.
 The Joyner / Giuffrida Collection



PTR512/14
Serge Alain Nitegeka
Fragile Cargo XI
 2014
 Paint on wood
 79 1/2 x 34 13/16 x 19 1/4 in.
 The Joyner / Giuffrida Collection



PTR512/25

Shinique Smith

No Key, No Question

2013

Ink, acrylic, fabric and collage on canvas over panel

60 x 60 x 2 in.

The Joyner / Giuffrida Collection



PTR512/26

Shinique Smith

Phases

2012

Collage, ink and fabric on paper

18 x 12 in.

The Joyner / Giuffrida Collection



PTR512/27

Shinique Smith

Study for Love Is

2015

Acrylic, ink, fabric and collage on canvas

18 x 14 x 1.5 in.

The Joyner / Giuffrida Collection



PTR512/28

Shinique Smith

Where My Dreams Grow (Study)

2012

mixed media, ink, acrylic, fabric and collage on paper

17" x 15"

The Joyner / Giuffrida Collection



PTR512/15

Taveres Strachan

I Belong Here (yellow)

edition 2 of 9

2012

Blocked-out neon glasswork

24 x 48 in.

The Joyner / Giuffrida Collection

PTR512/59

Jack Whitten

American, 1939 - 2018

Omikron I

1977

Acrylic on canvas

64 x 52 in.

The Joyner / Giuffrida Collection