

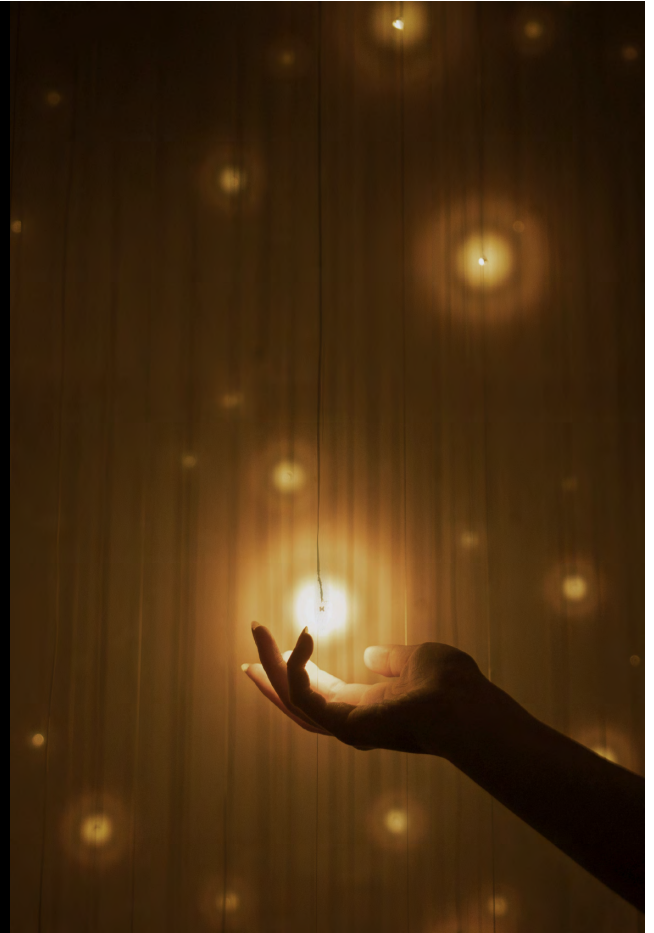


SMART MUSEUM OF ART
THE UNIVERSITY OF CHICAGO

5550 S. Greenwood Ave.
Chicago, Illinois 60637
smartmuseum.uchicago.edu

teamLab

**Everything
Exists
in
Infinite
Continuity**



Smart Museum of Art announces teamLab solo exhibition

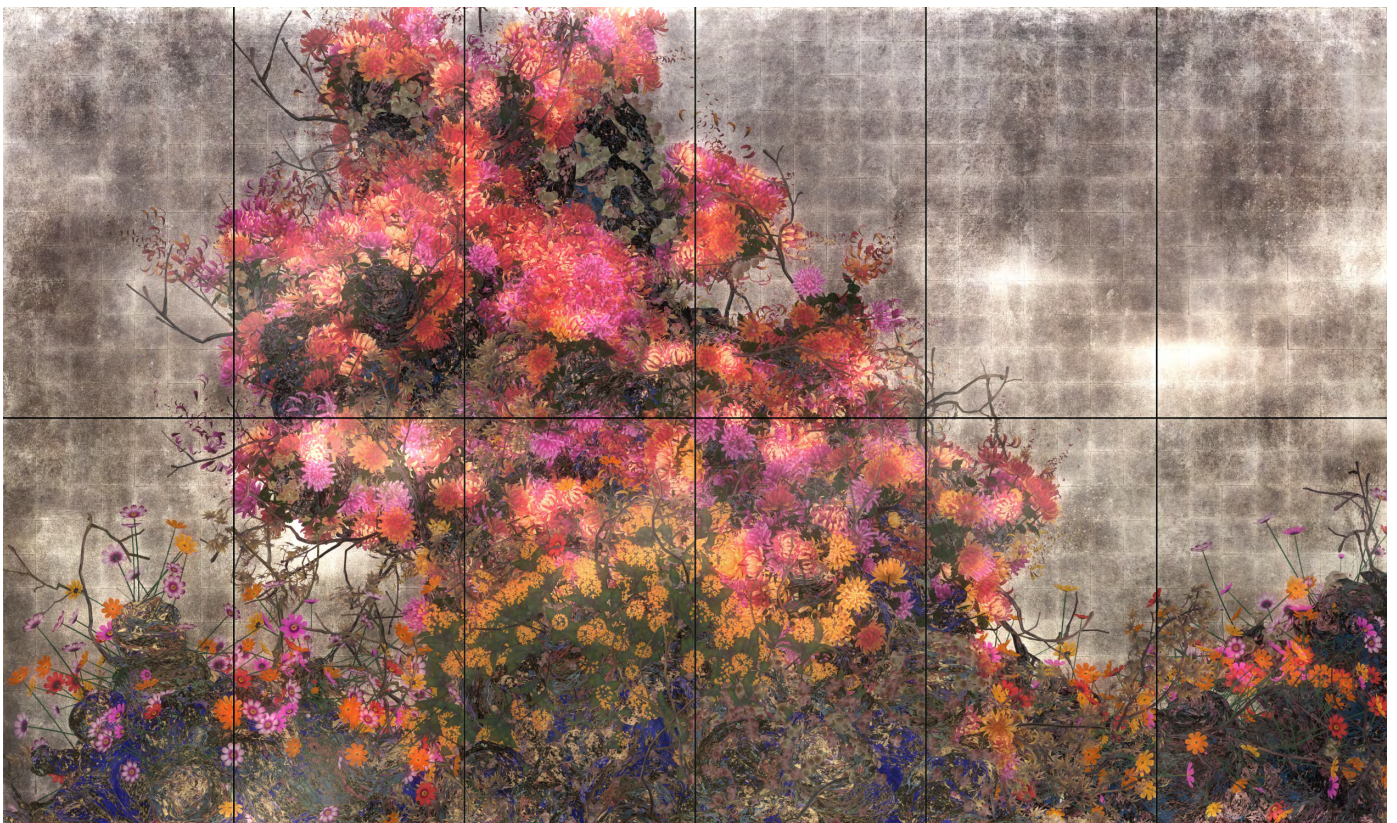
Opens September 22, 2026 through February 21, 2027

CHICAGO, IL — The **Smart Museum of Art** at the University of Chicago is honored to present *teamLab: Everything Exists in Infinite Continuity*, on view from September 22, 2026, through February 21, 2027. The exhibition marks the international art collective's first major institutional presentation in the midwestern region. Organized by the Smart's Dana Feitler Director **Vanja Malloy** and curator **Allison Martino**, the exhibition will celebrate teamLab's creative practice at the intersection of art and science. Informed by historical approaches to perspective since the dawn of time, **teamLab** builds upon this longstanding practice to expand what is possible in this new era of 21st-century technology. Admission to the Smart's exhibitions is always free and open to all.

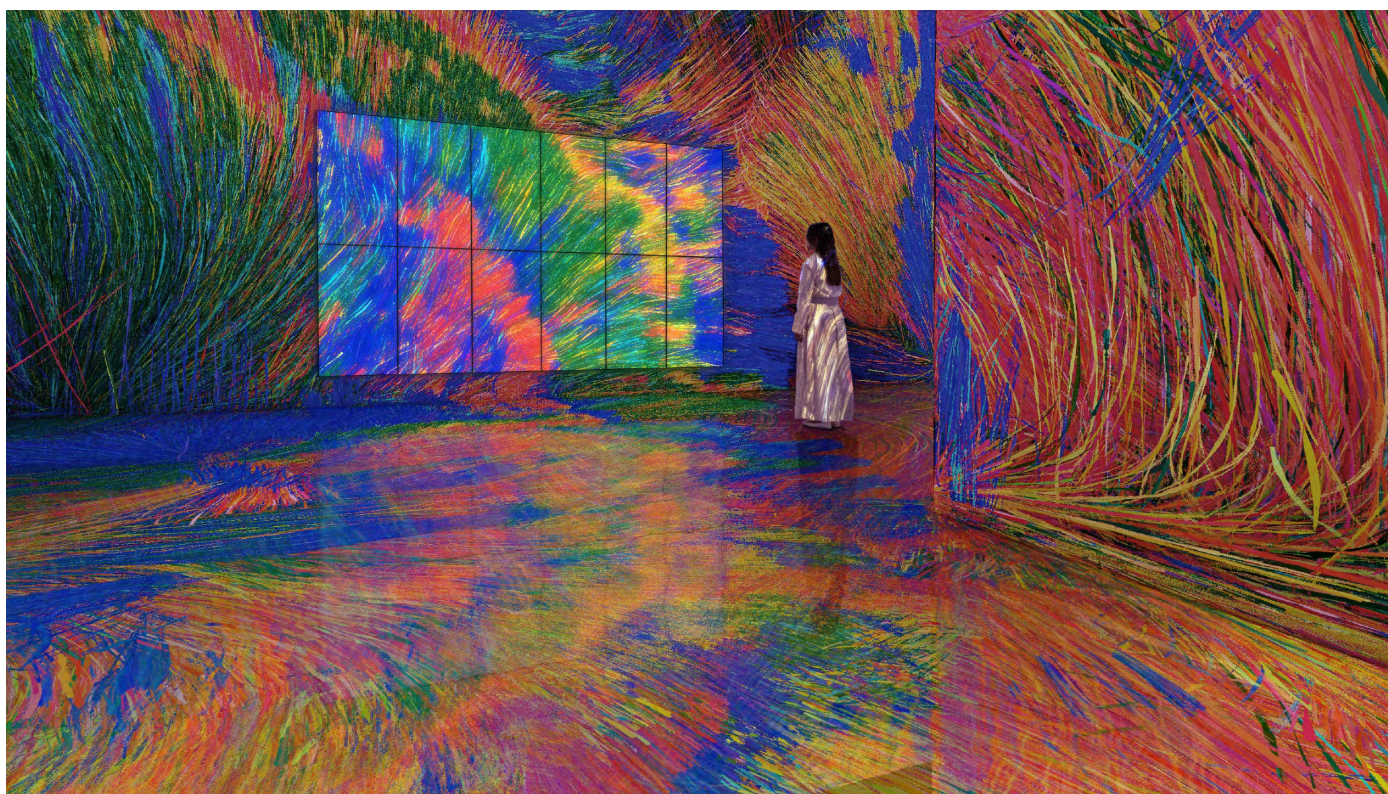
“teamLab has long been at the forefront of integrating technology into artistic practice, creating immersive environments that place the human experience at their core. Their work invites audiences to reflect on individual perception while emphasizing our interconnectedness. In many ways, their installations bring to life the kind of immersive vision that artists a century ago could only imagine,” Malloy commented.

Founded by **Toshiyuki Inoko** in 2001, the show explores teamLab’s body of work with a focus on the collective’s wide ranging experimentation with art created through digital technology. Featuring teamLab’s early computer-generated monitor artworks, an array of immersive and interactive installations, and the group’s most recent work—showcasing an expanded engagement with perception—the exhibition reflects the profoundly interdisciplinary collaboration taking place among a large collective of artists, scientists, computer programmers, botanists, mathematicians, and architects. The show will also present multiple iterations of works that will be on view for the first time, alongside the North American premiere of teamLab’s *Massless Suns and Dark Suns*.

“We are honored to be part of this exhibition at the Smart Museum of Art, University of Chicago,” said Inoko. On the meaning behind the exhibition title, *teamLab: Everything Exists in Infinite Continuity*, Inoko said, “What is existence? Existence arises not only as self-containing objects, but within an environment, and formed by perception. We are not looking at the world from the outside but as part of a continuity, and from within that continuity, we perceive existence. Everything exists in a long borderless continuity.”



In line with the Smart's commitment to exploring art, science, and technology through an interdisciplinary lens, the accompanying exhibition catalogue will feature contributions from international scholars across fields of study. teamLab's practice will be contextualized through essays by **Laura Lee**, associate professor of Modern Languages and Linguistics at Florida State University, and **Barbara London**, curator and founder of the video-media program at the Museum of Modern Art, as well as interviews with **Mariana Babo-Rebello**, cognitive neuroscientist at the August Pi i Sunyer Biomedical Research Institute in Barcelona, and teamLab founder **Toshiyuki Inoko**. The publication will also see first-time English-language translations of essays by notable Japanese biologist **Fukuoka Shin-Ichi**, professor at Aoyama Gakuin University, and art historian **Tsutsui Tadahito**, associate professor at the Graduate School of Letters at Kyoto University. The catalogue, *teamLab: Everything Exists in Infinite Continuity*, is co-edited by Malloy and Martino, published by the Smart Museum of Art and distributed by the University of Chicago Press.



“The Smart is thrilled to bring teamLab’s work to our campus where we will expand the reach and visibility of this international collective through free admission and public programs. With more than two decades of category defying presentations, teamLab has garnered wide acclaim for their innovative work throughout parts of Asia where they have exhibited widely,” said Martino.

Dynamic fall programming will include talks with **Christiane Paul**, Curator of Digital Art at the Whitney Museum of American Art, and a public conversation with teamLab.

Principal support for this exhibition is provided by Amy and Paul Carbone.

Major support is provided by the University of Chicago Women's Board, Lorna Ferguson and Terry Clark, and Ann Ziegler, in memory of Kathleen Cronin.

Support is provided by the Center for East Asian Studies at the University of Chicago, the Chu Foundation, Yue Li and Hannah So, Brien O'Brien and Mary Hasten, Hans Reiser and Alan Taylor, Ray Iwanowski and Erica Noble, the Chauncey and Marion D. McCormick Family Foundation, Clea and Daniel Van Voorhis, Charles H. Mottier and Philip J. Vidal.

Additional support is provided by the Smart's Board of Governors and SmartPartners.

#

For all media inquiries: Florie Hutchinson | florie.hutchinson@gmail.com | (415) 515-4696



IMAGE CREDITS

Cover: teamLab, *Massless Suns and Dark Suns*, 2022–present, interactive installation, endless. Sound: Hideaki Takahashi. © teamLab (Rendering)

Page 2: teamLab, *Continuous Life and Death at the Now of Eternity II*, 2019, digital Work, 12 channels, endless. © teamLab

Page 3: teamLab, *Order in Chaos*, 2026, interactive installation, computer generated image. Sound: Hideaki Takahashi © teamLab (Rendering)

Page 4: teamLab, *Dissipative Figures – Murmuration*, 2026, from the series *Dissipative Figures – 1000 Birds, Light in Dark*, 2023–present, interactive installation, computer generated image. Sound: Hideaki Takahashi. © teamLab (Rendering)

About teamLab

teamLab (f. 2001) is an international art collective. Their collaborative practice seeks to navigate the confluence of art, science, technology, and the natural world. Through art, the interdisciplinary group of specialists, including artists, programmers, engineers, CG animators, mathematicians, and architects, aims to explore the relationship between the self and the world, and new forms of perception.

In order to understand the world around them, people separate it into independent entities with perceived boundaries between them. teamLab seeks to transcend these boundaries in our perceptions of the world, of the relationship between the self and the world, and of the continuity of time. Everything exists in a long, fragile yet miraculous, borderless continuity.

teamLab exhibitions have been held in cities worldwide, including New York, London, Paris, Singapore, Silicon Valley, Beijing, and Melbourne among others. teamLab museums and large-scale permanent exhibitions include teamLab Borderless and teamLab Planets in Tokyo, teamLab Biovortex Kyoto in Kyoto, teamLab Phenomena Abu Dhabi in Abu Dhabi, teamLab Borderless Jeddah in Jeddah, and teamLab SuperNature Macao, with more to open in cities including teamLab Borderless Hamburg in Hamburg.

teamLab's works are in the permanent collection of the National Gallery of Victoria, Melbourne; Art Gallery of New South Wales, Sydney; Art Gallery of South Australia, Adelaide; National Gallery of Australia, Canberra; Amos Rex, Helsinki; Museum of Contemporary Art, Los Angeles; Asian Art Museum, San Francisco; Borusan Contemporary Art Collection, Istanbul; and Asia Society Museum, New York, among others.

teamlab.art

About the Smart Museum of Art

The mission of the University of Chicago's Smart Museum of Art is to lead integrative research and create transformative experiences through art.

The Smart is a site for rigorous inquiry and exchange that encourages the examination of complex issues through the lens of art objects and artistic practice. Through strong community and scholarly partnerships, the Museum incorporates diverse ideas, identities, and experiences into its exhibitions and collections, academic initiatives, and public programming. Admission is always free.

smartmuseum.uchicago.edu

Smart Museum of Art

The University of Chicago
5550 S. Greenwood Avenue
Chicago, Illinois 60637