



**DINOSAURS
OF THE
SAHARA**



Contact

Nena Connelly-Smoleniec
nconnelly@uchicago.edu

DINOSAURS OF THE SAHARA



Contents

Exhibit Overview	3-9
Components & Requirements	10
Example Floor Plan	11
About Paul Sereno & the Fossil Lab	12
Exhibit Extensions	12



Ken Blaze

A towering exhibit opener, centerpiece, or public exhibit advertisement, the rearing *Jobaria* skeleton measures 32 feet in height.

Cover photo: Predator and prey from Africa's dinosaur era.



Exhibit Overview

Dinosaurs of the Sahara brings the unique world of African dinosaurs to life with original fossils and footage from the Sahara, one-of-a-kind mounted skeletons and flesh models, and an unforgettable rearing dinosaur giant.

Touch real fossils, including a SuperCroc skull. Relive the excitement and adventure of Paul Sereno's ground-breaking Saharan expeditions with live footage and an interactive dinosaur dig site. Get an up-close look at Africa's greatest predators, the *T-rex*-sized *Spinosaurus* and *Carcharodontosaurus*. Meet some of the most bizarre plant-eating dinosaurs ever discovered, like the 'Mesozoic cow' *Nigersaurus*.

Highlights

- **Jobaria skeleton** rearing to 32 feet
- **Original fossils** to touch
- **6 mounted** dinosaur skeletons from Africa
- ***Spinosaurus*** and ***Carcharodontosaurus*** skulls
- **Flying reptile giant** from the Sahara
- **Film footage** from real expeditions
- **Kids dig site** set in the Sahara



Ken Blaze

DINOSAURS OF THE SAHARA



Africa's Lost World of Dinosaurs

Photos by Ken Blaze



Afrovenator attacks the young long-necked *Jobaria*.

Meet Africa's dinosaurs that lived on a continent drifting into isolation. Fierce, weird and amazing, the predators and plant-eaters are known only from the Sahara. Buckle up —their world included fish-eating dinosaurs and dinosaur-eating SuperCros.



Sail-backed *Suchomimus* goes fishing.



A Bizarre Plant-Eater

Meet *Nigersaurus*, one of Africa's stars, the most bizarre long-necked dinosaur ever. Found in the Sahara, this 40-foot long plant-eater has as many as 500 needle-shaped teeth packed into its jaws for cropping greens close to the ground.





Meat-Eating Menagerie

Come face-to-face with the greatest array of predators ever found prowling the same landscape. Skeletal mounts, flesh models and real fossils bring to life *Suchomimus* ("croc mimic"), *Rugops* ("rough face") and *Carcharodontosaurus* ("shark-toothed reptile").



Daniel Vidal



Ken Blaze



Ken Blaze

DINOSAURS OF THE SAHARA



Experiential

Kids rush to the Saharan dig site to expose bones of one of the dinosaurs on display and to touch real fossils.



DINOSAURS OF THE SAHARA



Up-Close & Personal

Touching casts and footprints allows visitors to get closer to Africa's dinosaurs.



DINOSAURS OF THE SAHARA



Flesh on the Bone

See the fleshy parts of a life-sized adult *Jobaria*—without the smell! Paleontologists put flesh on the bone to understand the anatomy and lifestyle of extinct creatures.

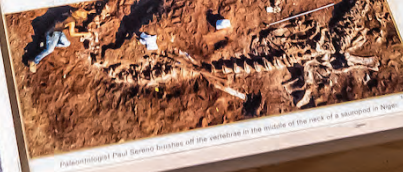


FLESH ON THE BONE

BASIC STATS

Name: *Jobaria tigridorum*
Lived: Approx. 160 million years ago
Neck Length: 13 feet (4 meters)
Weight: 20 tons (18 metric tons)
Habitat: Plains and banks of rivers and other plains
Diet: Acanthopanax, conifer trees and other plants
Found: Niger, West Africa

LONG NECKS



HEAD AND NECK DISSECTED

In life the bones of the skull and neck are covered by skin, the skull has scales or scutes for the scales, and the neck has scales or scutes for the scales. The long neck bones are covered by skin, the skull has scales or scutes for the scales, and the neck has scales or scutes for the scales. The long neck bones are covered by skin, the skull has scales or scutes for the scales, and the neck has scales or scutes for the scales.

AIR SACS



TOE PADS AND CLAWS





Components & Requirements

Major Components

Real Fossils

Carcharodontosaurus maxilla
Jobaria femur
Petrified tree trunk
Sarcosuchus skull in jacket

Dinosaur Skeleton Mounts (Casts)

Jobaria adult (rearing)
Jobaria juvenile
Nigersaurus
Suchomimus
Afrovenator
Pterosaur

Skull & Bone Casts

Carcharodontosaurus skull
Rugops skull
Spinosaurus skull
Pterosaur skull, wing, tooth
Nigersaurus skull & neck

Flesh Models

Jobaria dissected neck
Pterosaur flying
Carcharodontosaurus head
Rugops head
Nigersaurus head & neck

Media

Expedition to the Sahara theater
(video of expedition footage)

Interactives

Kid's expedition dig pit (interactive)
Rubbing station
Jobaria hand & print (touch)
Suchomimus & *T-rex* arm (touch)
Bronze juvenile *Jobaria* skull (touch)
Jobaria femur photo station (touch)

Optional Addition

Mechanical *Suchomimus*
with movable limbs (interactive)

Basic Requirements

Exhibit Space

4,000-10,000 sq. ft. exhibit

Maximum Height

15 ft. for general exhibit
35 ft. for rearing *Jobaria* mount

Power Supply

Two 110-volt outlets

Maximum Crate Size

181' x 53' x 52'

Installation

Forklift (up to 25 ft.) & genie lift,
ladders and stanchions
Hanging mount for pterosaur model

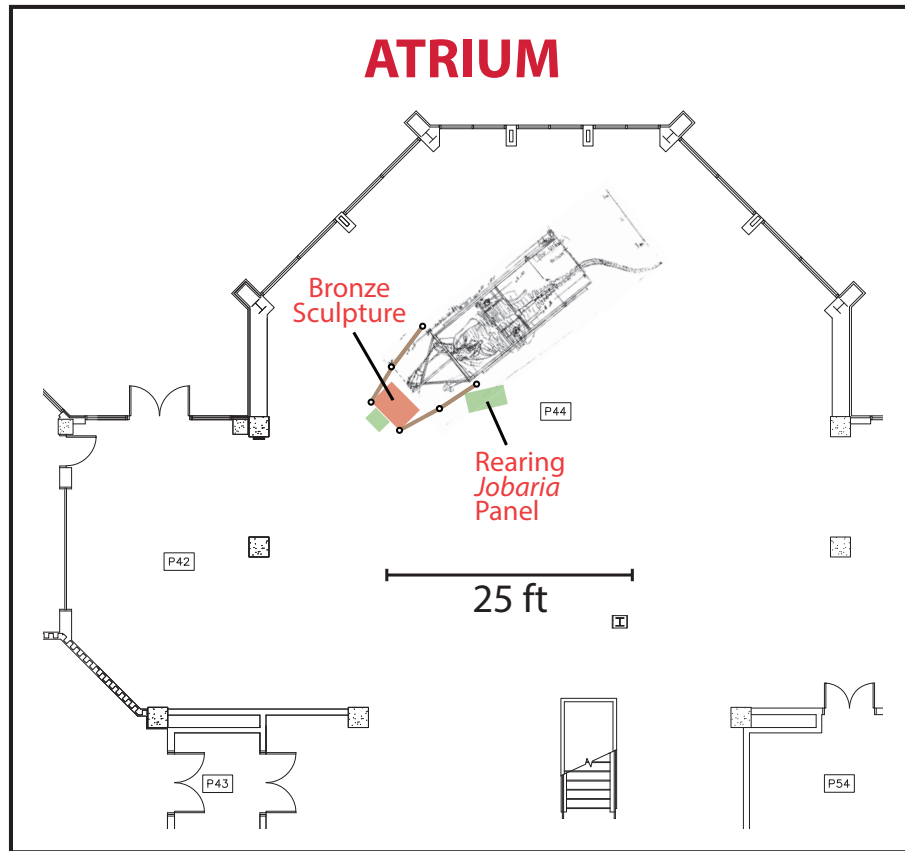
Projectors

1 projector (wall projection)

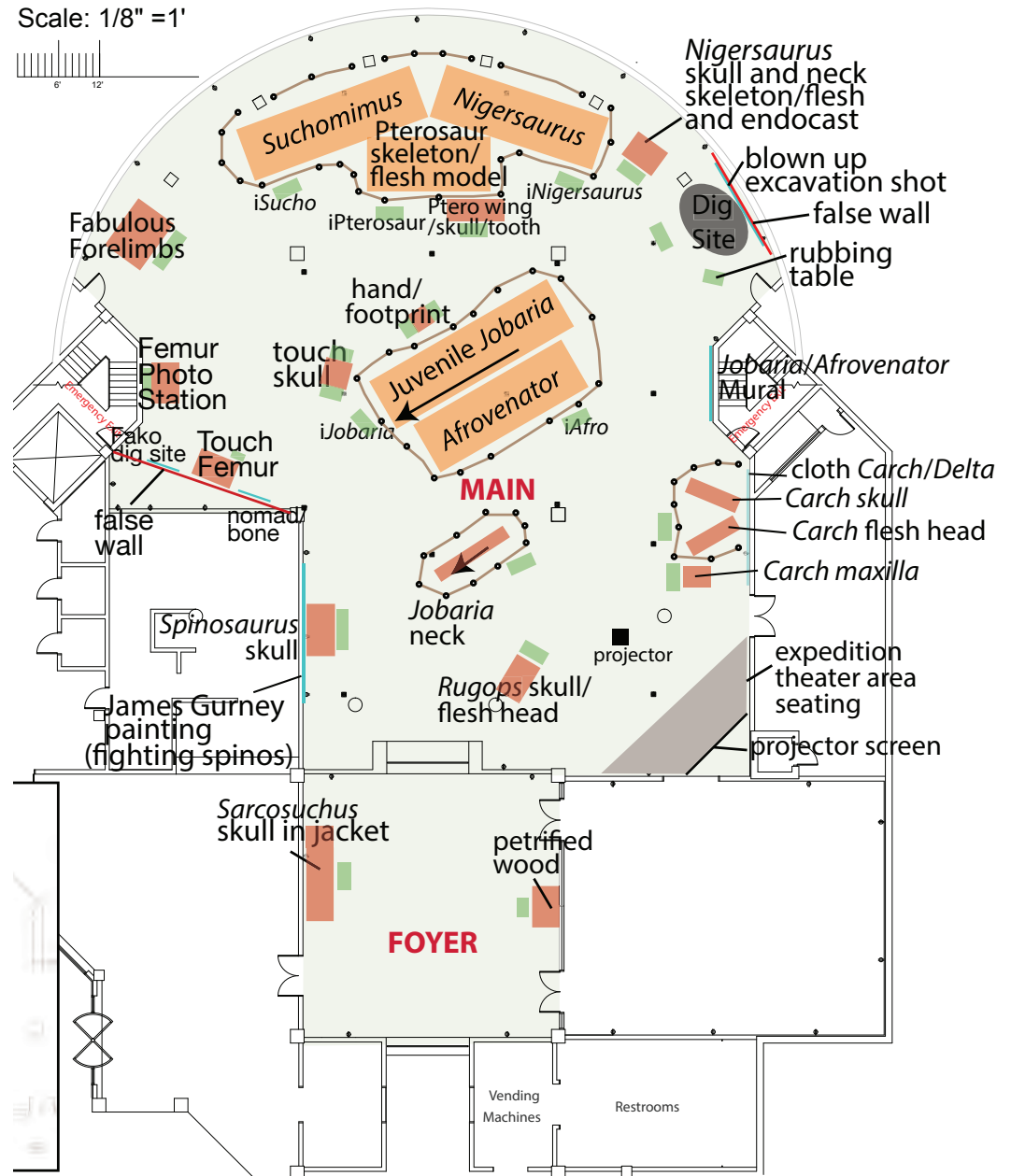
DINOSAURS OF THE SAHARA



Example Exhibit Floor Plan



Layout for 7,500 sq. ft. with 35-foot and 15-foot ceiling height minimums for the Atrium and Main halls, respectively.



DINOSAURS OF THE SAHARA



About Paul Sereno & the Fossil Lab

A *University of Chicago* Professor and *National Geographic* Explorer, Paul Sereno's field exploits began in the Andes in Argentina, where he discovered the earliest dinosaurs. Other expeditions have explored the Sahara and Gobi Deserts, India's Thar Desert and remote valleys in Tibet. From Africa, he has unveiled spectacular crocodiles and dinosaurs, including the 50-foot long *Spinosaurus* and 40-foot long SuperCroc. Featured in *National Geographic* magazine and many documentaries, Sereno was named "Teacher of the Year" by the *Chicago Tribune*, won the University Medal from his alma mater Columbia University, and received the Presidential Award for Excellence in Science, Mathematics, and Engineering Mentoring from President Obama.

The *Fossil Lab's* exhibit program directly supports its renowned research enterprise. Exhibits are designed to facilitate teaching and learning at all ages with accessible, cutting-edge content that offers authentic fossils, major historical events and expeditions, and real people.

Exhibit Extensions



Add-on Options

- Speaking event (Paul Sereno)
- Films (related documentaries)
- Kid's expedition dig site
- Mechanical *Suchomimus* skeleton

Themed Merchandise

- Puzzles
- Casts
- Graphics for t-shirts, mugs, etc.



Other Exhibits

