

# Sustainability Overview

- Mission
- Facts about University of Chicago Medicine and Biological Sciences
- Environmental impact, facts and goals
- Current and future sustainability efforts
- Partnerships

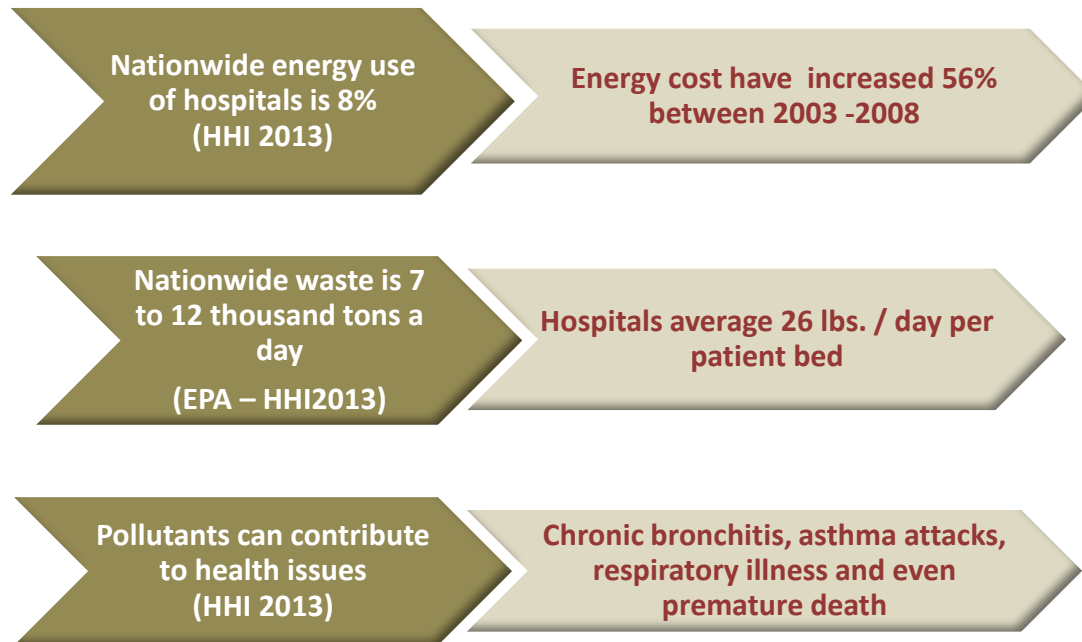
# Sustainability Mission

Achieve sustainability goal by establishing and promoting environmental best practices at UCM/BSD, reduce environmental waste while sustaining current operational procedures.

# University of Chicago Medicine & Biological Sciences-Facts

The University of Chicago Medicine and Biological Sciences has been at the forefront of medical care and research since 1927, located in historic Hyde Park on the South Side of Chicago, the Medical Center campus includes Research, Inpatient facilities including the Center for Care and Discovery, Bernard A. Mitchell and Comer Children's Hospitals , and the Duchossois Center for Advanced Medicine which is an outpatient facility on the campus in addition to numerous outpatient locations throughout the Chicago area.

# Healthcare Environment Impact



# Environmental Challenges

- The University of Chicago Medicine and Biological Sciences is committed to putting their patients first by providing a healthier hospital, a healthier community and a cost savings reduction.
- In 2013 Stericycle, the National Leader in healthcare waste, partnered with The University of Chicago Medicine to stay in compliance, improve environmental performance and save money. Stericycle integrated one stream waste by managing all waste streams.

# Why Recycle ?

- Saves the Earth and precious resources
- Reduces air and water pollution
- Helps mitigate Global Warming & reduces pollution
- Helps reduce emissions contributing to greenhouse gases
- Encourages sustainability for future generations
- Reduces waste in landfills



# 2014 Sustainability Efforts

- Food: Recycling program that divers certain materials from the waste stream (plastics, bottles, aluminum cans, cardboard).
- Energy: Lighting Retrofits rebate (\$13,762), Steam Traps rebate (\$40,870), Pipe Insulation rebate (\$63,943) and Kovler cGMP Lab Chilled Water Loop Connection rebate (\$5,300).
- Reduction In Waste: Hazardous waste, trash, red bag, chemo, sharps, E-Waste, shredded, single stream, batteries and lamps.
- Purchasing: Programs in place with key vendors to minimize waste associated with materials that are shipped into UCM every day.



# Current Recycling Efforts





# Single Stream Recycling



- YTD Trees saved 10,680
- Gallons of oil saved 238,739
- Gallons of water saved 1,497,990
- Cubic yard land fill saved 7,958

# Waste Management



- In 2013, over 57,602 lbs. of sharps was diverted from the landfill



- Ensures proper disposal of pharmaceutical waste
- Continuing education for employees, working to reduce unneeded waste through these means

# Confidential Document Shredding



# E-Waste



- Over 111,466 lbs. recycled in 2013
- Saved 50 metric tons of CO<sub>2</sub> emissions
- Equivalent to 506 gallons of gas consumed





# Battery Recycling

- Program Implemented in March of 2013



# Scrap Metal Recycling

- YTD 30,000 lbs. Recycled





# Fluorescent Lamps



- Facilities Planning , Design and Construction has removed T12 Fluorescents which contained mercury, and replaced them with high energy long lasting lamps.

# Green Purchasing

- Reduces impact caused by using raw material





# Long Term Sustainability Goals

- Increase year end recycling by 20%
- Implement Greening in GOR
- Energy Conservation
- Purchasing

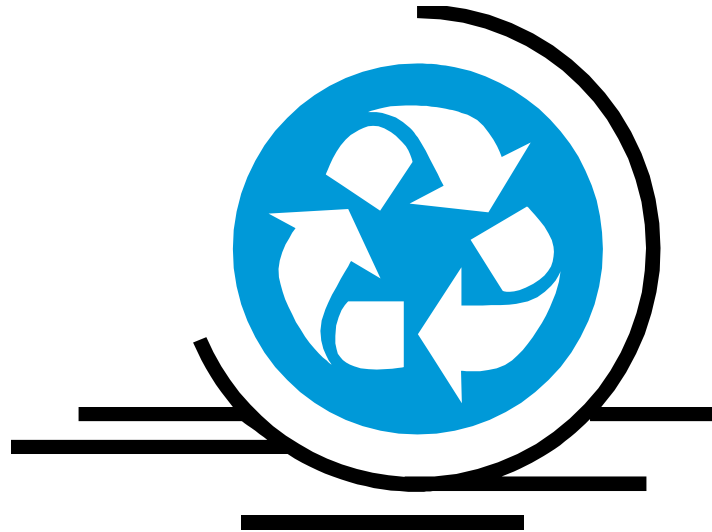


# Celebrating Our Successes

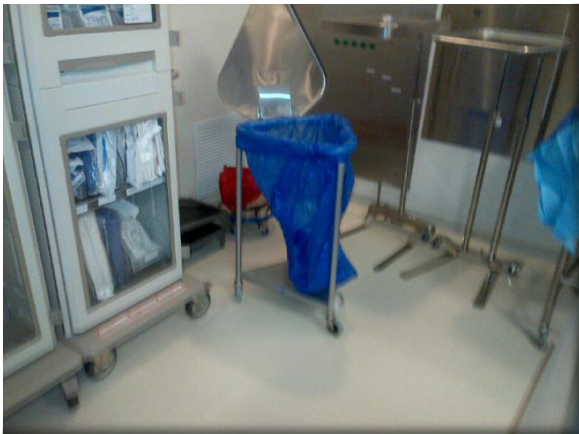
## Previous UCM Practice Green Health Award Winner:

- Partner for Change Award 2007-2008
- Making Medicine Mercury Free Award 2009
- Partner for Change with Distinction Award 2010

# Next Steps



# OR Recycling



- Implement recycling of OR materials and waste.

# Cafeteria Recycling



# Radiology

- Radiology Films / File

Two overlapping orange forms are shown. The top form is a patient information form with fields for No., Date, Name, Address, Sex, Remarks, No., Date, Address, Sex, and Remarks. The bottom form is a log sheet with columns for DATE REC'D, LOANED TO, X-RAY DESCRIPTION, NO. OF FILMS, and DATE RETURNED.

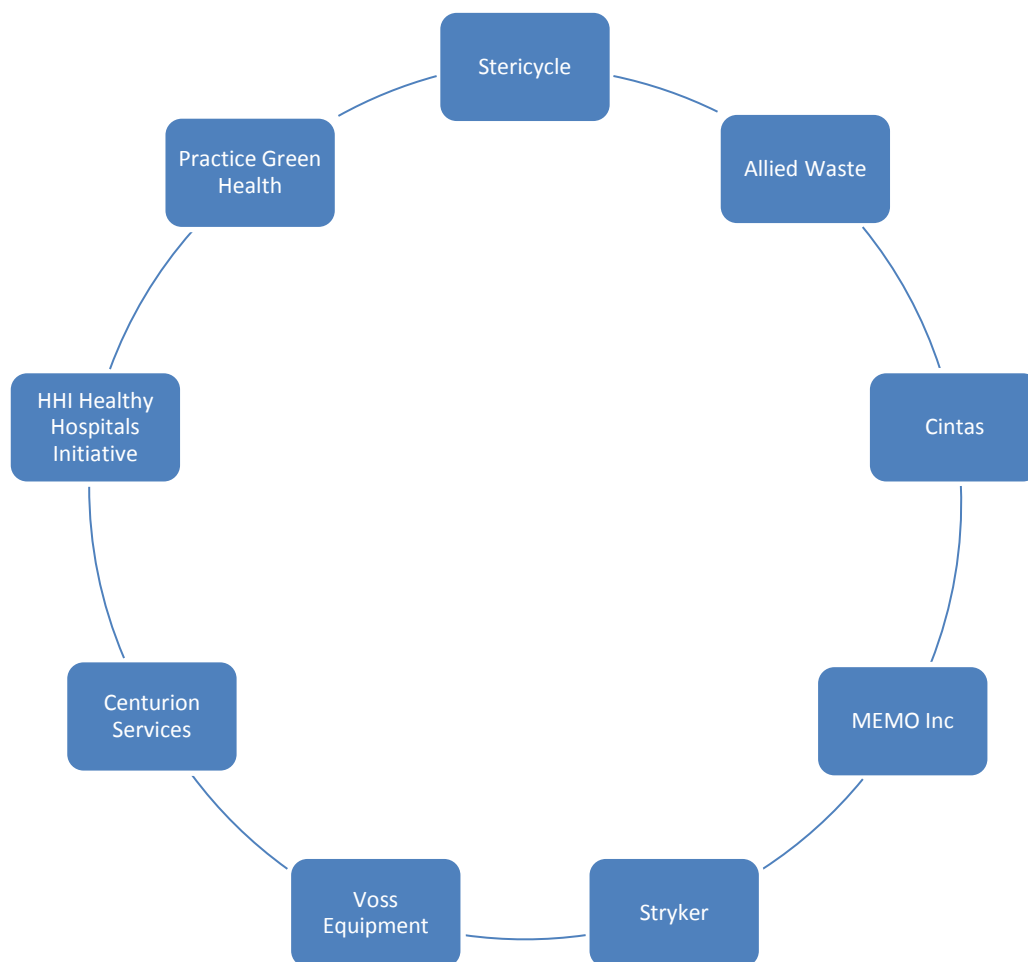
# Defib Pads

- Emergency Room - Critical Care Units
- Operating Room - Central Supply - EMS





# Partnerships





# References

- Greenhouse Gas Equivalencies Calculator." EPA ; <http://www.epa.gov/cleanenergy/energy-resources/calculator.html>.
- "Why Recycle"; [http://www.ecocycle.org/files/pdfs/why\\_recycle\\_%20brochure.pdf](http://www.ecocycle.org/files/pdfs/why_recycle_%20brochure.pdf)
- "Practice Green Health Best Practices"; <https://practicegreenhealth.org/topics/energy-water-and-climate/energy/best-practices-energy-efficiency>,
- "Less Waste." HHI. Healthier Hospitals Initiative, <http://www.healthierhospitals.org/>
- "Waste Reduction Model (WARM)." EPA; Environmental Protection Agency, 18 Jan. 2013. Web. 5 Feb. 2014