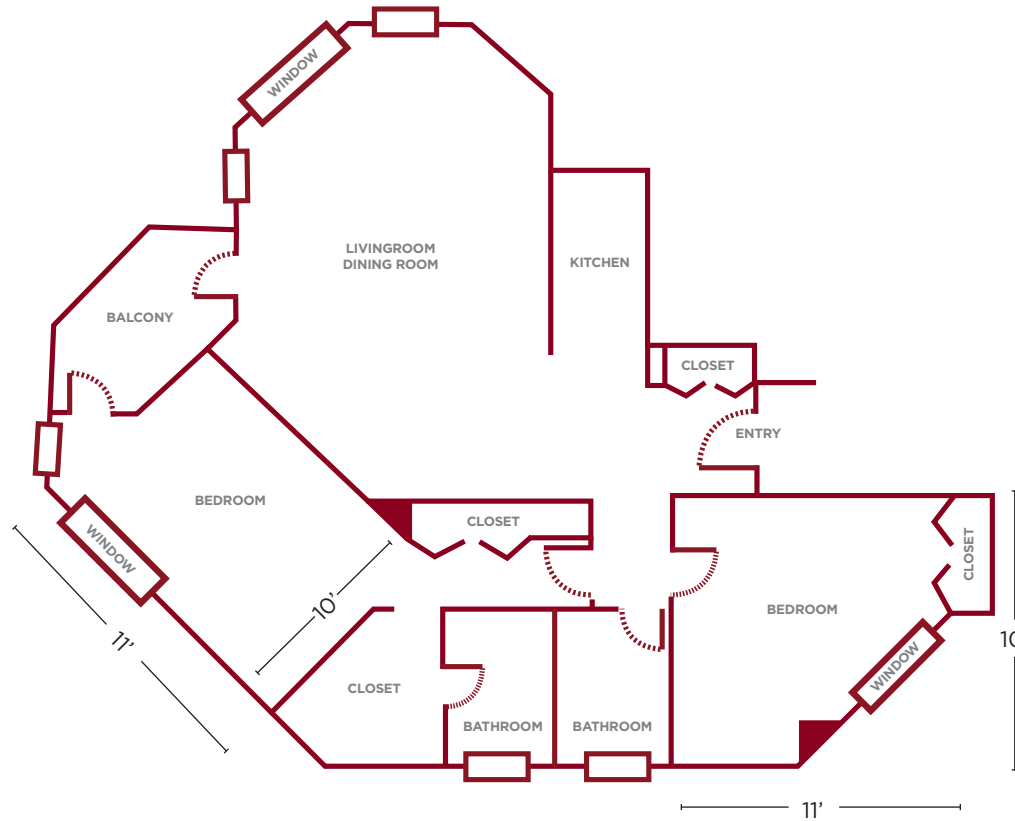


AVERAGE APARTMENT

STONY ISLAND HALL



5700 Stony Island Ave.
Chicago, IL 60637



APPROXIMATE ROOM DIMENSIONS

1,000 Sq. Feet
Bedrooms average 10' x 11' each

FURNITURE & ROOM AMENITIES

- One triple bedroom, one double bedroom
- 4 beds
frame: 38" x 86"
mattress: 36" x 80" XL twin
 - 4 desks (24" x 42")
 - 4 desk chairs
 - Carpet
 - Dresser with 3-4 drawers
 - Closet with shelf and hanging rod
 - Dining table and chairs
 - Sofa
 - Kitchen with refrigerator and stove
 - Semi-private bathrooms
 - Balcony

HALL AMENITIES

- Community commons
- Exercise room
- Indoor & outdoor bike storage
- 24/7 front desk
- Vending machines
- Computer lab and printing

NOTE:

This floor plan is of an average room and is for illustrative purposes only. The College Houses contain a wide variety of room types. We are unable to provide floor plans or dimensions for specific rooms.