



## GRANVILLE - GROSSMAN RESIDENTIAL COMMONS



6031 S. Ellis Ave., Chicago, IL 60637  
773.702.4550

### EAST



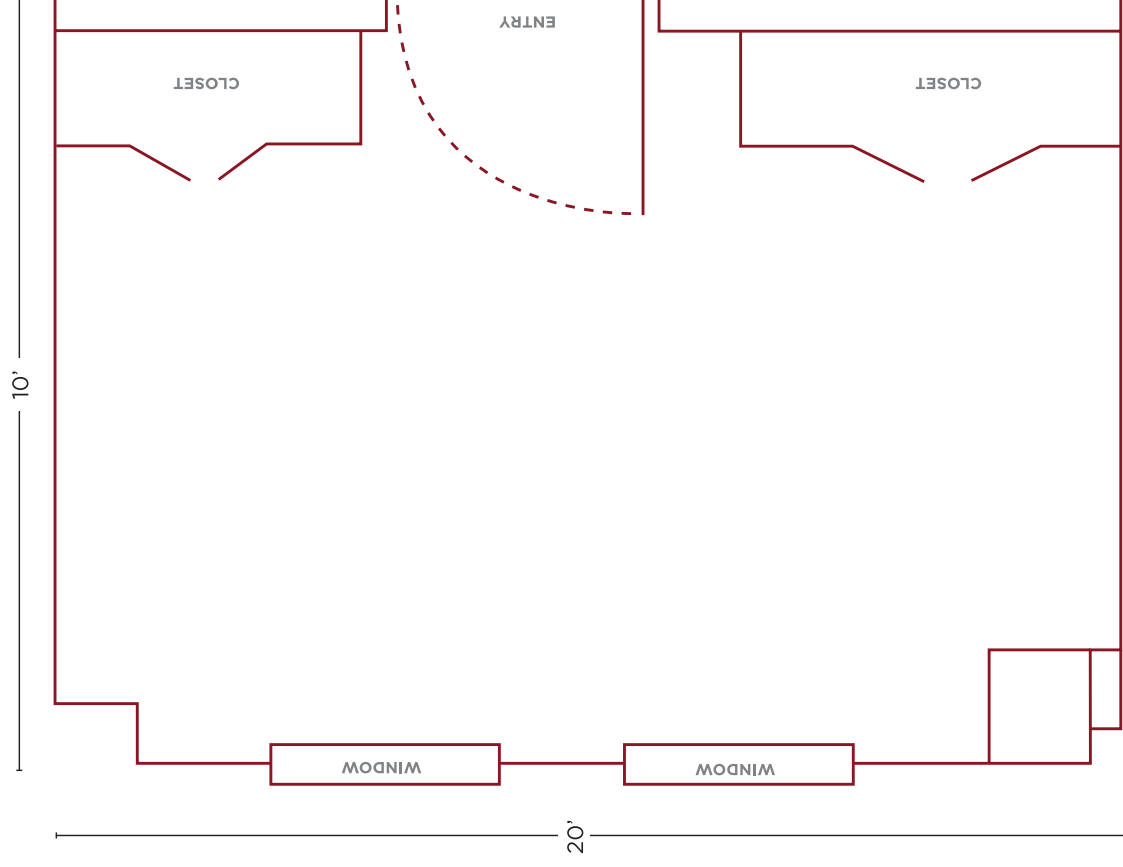
### WEST



### NOTE:

This floor plan is of an average room and is for illustrative purposes only. The College Houses contain a wide variety of room types. We are unable to provide floor plans or dimensions for specific rooms.

## AVERAGE DOUBLE



### APPROXIMATE ROOM DIMENSIONS

10' x 20'

### FURNITURE & ROOM AMENITIES

- 2 beds, bunkable frame: 38" x 86" mattress: 36" x 80" XL twin
- 2 desks (24" x 42")
- 2 desk chairs
- Carpet
- Dresser with 3-4 drawers
- Movable bookshelf
- Closet with shelf and hanging rod

### HALL AMENITIES

- Community commons
- Recreation room with exercise equipment
- Indoor & outdoor bike storage
- Music practice rooms
- Piano
- 24/7 front desk
- Courtyard
- Community kitchen
- Reading room
- Study rooms
- Vending machines
- Computer lab and printing



THE UNIVERSITY OF  
**CHICAGO**

Campus &  
Student Life

housing.uchicago.edu