

## BURTON-JUDSON COURTS



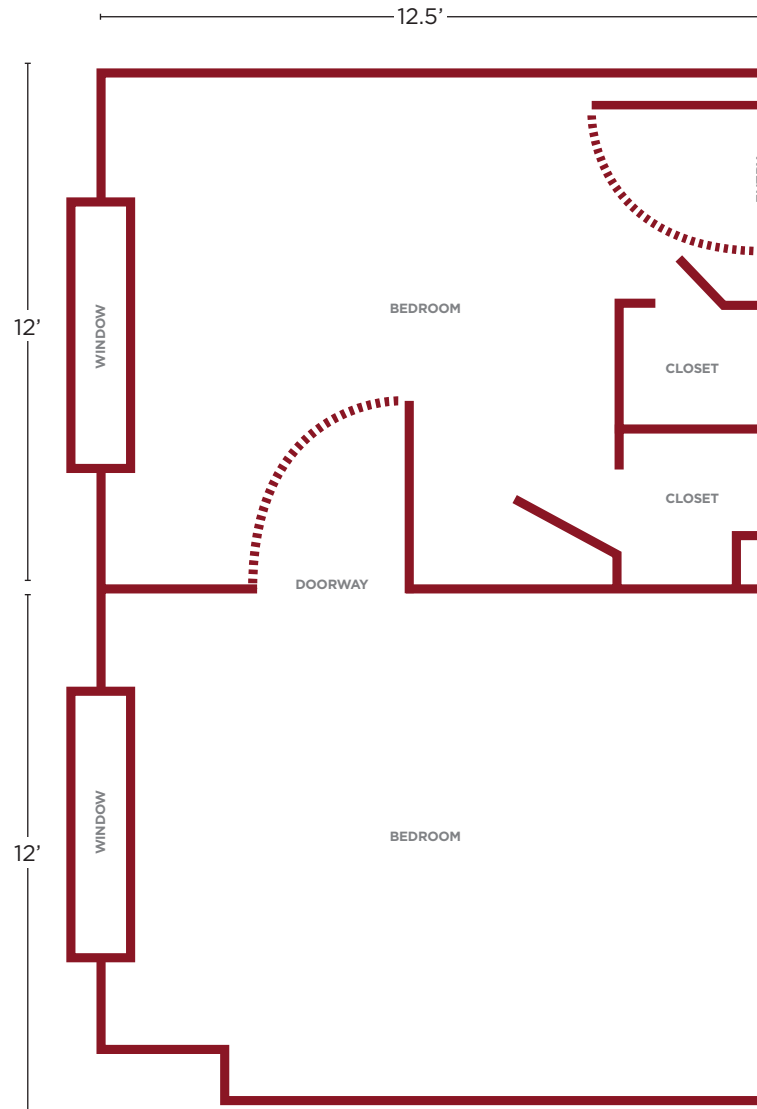
1005 E. 60th St., Chicago, IL 60637  
773.702-5100



**NOTE:**

*This floor plan is of an average room and is for illustrative purposes only. The College Houses contain a wide variety of room types. We are unable to provide floor plans or dimensions for specific rooms.*

### AVERAGE SUITE



**APPROXIMATE ROOM DIMENSIONS**

12' x 12.5'

**FURNITURE & ROOM AMENITIES**

- In each of the connected rooms:
- 1 bed, bunkable frame: 38" x 86" mattress: 36" x 80" XL twin
  - 1 desk (24" x 42")
  - 1 desk chair
  - Vinyl/Hard floor
  - Dresser with 3-4 drawers
  - Movable bookshelf
  - Closet with shelf and hanging rod

**HALL AMMENITIES**

- Community commons
- Indoor & outdoor bike storage
- Piano
- 24/7 front desk
- Courtyard
- Community kitchen
- Library
- Study rooms
- Vending machines
- Computer lab and printing