

BURTON-JUDSON COURTS



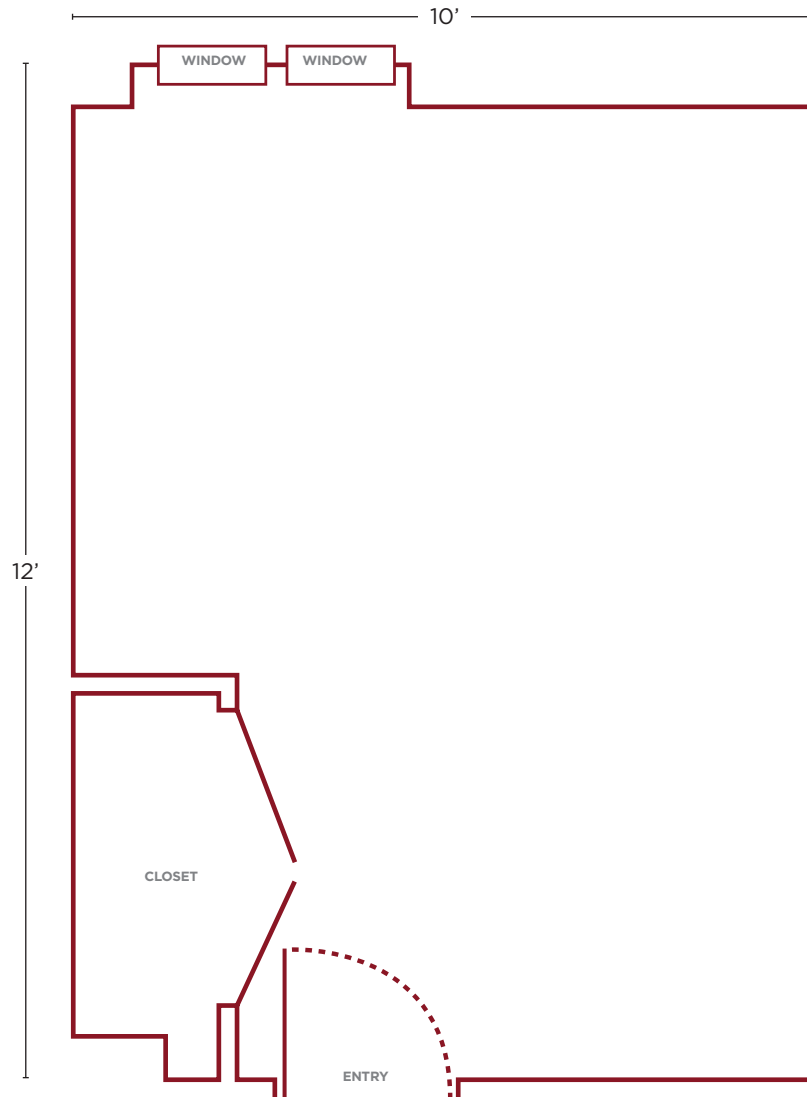
1005 E. 60th St., Chicago, IL 60637
773.702-5100



NOTE:

This floor plan is of an average room and is for illustrative purposes only. The College Houses contain a wide variety of room types. We are unable to provide floor plans or dimensions for specific rooms.

AVERAGE SINGLE



APPROXIMATE ROOM DIMENSIONS

10' x 12'

FURNITURE & ROOM AMENITIES

- 1 bed, bunkable frame: 38" x 86" mattress: 36" x 80" XL twin
- 1 desk (24" x 42")
- 1 desk chair
- Vinyl/Hard floor
- Dresser with 3-4 drawers
- Movable bookshelf
- Closet with shelf and hanging rod

HALL AMMENITIES

- Community commons
- Indoor & outdoor bike storage
- Piano
- 24/7 front desk
- Courtyard
- Community kitchen
- Library
- Study rooms
- Vending machines
- Computer lab and printing